



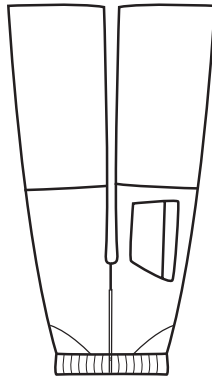
The Airfield, Headcorn, Kent, TN27 9HX, UK  
 Tel 01622 890967 - Fax 01622 891236  
 Email symbiosis.suits@btinternet.com  
 www.symbiosis.suits.btinternet.co.uk

## ORDER FORM - FREE-FLY BOTTOMS

Name \_\_\_\_\_  
 Sex \_\_\_\_\_  
 Address \_\_\_\_\_  
 \_\_\_\_\_  
 Country \_\_\_\_\_  
 Tel/Fax \_\_\_\_\_  
 Email \_\_\_\_\_

Office use only  
 Date Received \_\_\_\_\_  
 Amount Paid \_\_\_\_\_  
 Notes \_\_\_\_\_

Symbi Free-fly bottoms may be ordered with either a generously cut, baggy fit or with a slimmer cut, and built from a choice of heavy 100% cotton, or a lighter weight poly-cotton mix.



Stripes or chevrons may be added as shown at a small additional cost.

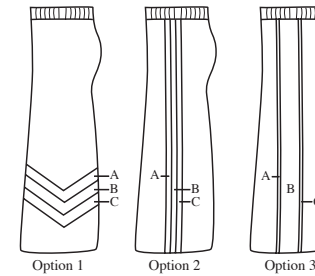
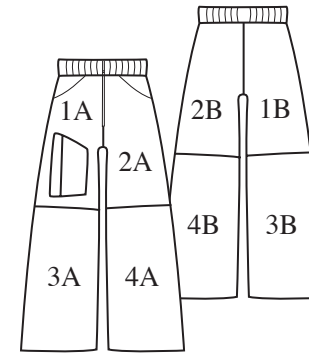
These Bottoms feature an 2 zip pockets, a zipped fly and broad velcro ankle cuffs.

For lightweight Free-Flyers a very lightweight Tactel may be used in certain colours (ask us for available stock). The legs may be "double-lined" to create more drag if desired.

<b>FREE-FLY BOTTOMS</b>	Baggy fit	£63
	Slimmer fit	
<b>Fabric</b>	100% Cotton	
	Poly-Cotton	
<b>Options</b>	Colour Stripes A-C	£9
	Lined Legs	£17
	Additional Pockets	£10
<b>Post and Packing</b>	Rush Order	£40
	UK	£7
	Europe	£12
	Outside Europe	£18
Payment for the full amount must accompany each order.		<b>TOTAL ENCLOSED</b>

## COLOURS

Fabrics	100% Cotton	Poly-Cotton
Black		
Dark Grey	■	
Light Grey		
White		
Navy Blue		
Royal Blue	■	
Light Blue		
Turquoise	■	
Jade Green	■	
Peppermint		
Mid Green		
Neon Yellow	■	
Golden Yellow		
Orange		
Red		
Burgundy		
Deep Pink	■	
Light Pink		
Purple		



### Your Colours

1A \_\_\_\_\_  
 1B \_\_\_\_\_  
 2A \_\_\_\_\_  
 2B \_\_\_\_\_  
 3A \_\_\_\_\_  
 3B \_\_\_\_\_  
 4A \_\_\_\_\_  
 4B \_\_\_\_\_

### Stripe Options

1  2  3

### Colour

A \_\_\_\_\_  
 B \_\_\_\_\_  
 C \_\_\_\_\_

## MEASUREMENTS

**Please take your measurements carefully.** We are unable to make your bottoms fit you without your correct measurements. Study the diagram to assist you. Get someone to help you, and double check each measurement. Measure yourself over track suit trousers.

**If we receive incorrect measurements, we will have to charge for modifications.**

Take all these measurements around the widest part, except the waist.

HEIGHT \_\_\_\_\_

WEIGHT \_\_\_\_\_

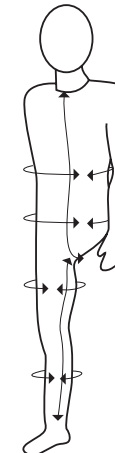
WAIST \_\_\_\_\_

HIP(around buttocks) \_\_\_\_\_

THIGH \_\_\_\_\_

CALF \_\_\_\_\_

Take all these measurements around the widest part,



### BODY

Be **VERY** careful with this measurement! Stand up straight, measure from under the crutch where the seams of your trousers meet, up the front to the collar of a close fitting T/shirt.

### INSEAM

From the crutch to the ankle bone.